

Criteria-7: Institutional Values and Best Practices

7.1.1 Number of gender equity promotion programs organized by the institution during the last five years

STES' Sinhgad Institute of Technology, Lonavala provides safety and secured environment for girl students and ladies faculty members in the institute. For these purposes the institute has constituted various committees like, Internal Complaint Committee, Grievance redressal cell, Counselors etc. These committees put on a variety of initiatives for female students. In addition, the institute has given counseling to female students in a variety of methods. The separate common rooms for girl students are provided for their comfort. The curriculum of SPPU has implemented by the institute, addresses the issues related to gender equity, environmental concerns, governance etc.

Safety and Security:

Girl students' safety and security is a major concern. The institute aspires to develop students who are self-sufficient, respectful of cultural variety, conscious of their social and civic duties, and sensitive to gender issues. There is a safe parking place fitted with CCTV closer to the academic blocks for female students. On campus, there is a separate and secure hostel facility for females. The classroom is set up in such a way that female students feel at ease.

Internal Complaint Committee takes care of issues of grievances and welfare of the women. Security guards are placed in the campus and hostels. On the special occasions like college fest, cultural / academic programmes, placement drives etc., special transportation is provided for girl students. All corridors and laboratories are equipped with fire extinguishers. Every year, a large celebration of Women's Day is held, and inspiring women personalities are invited to share their experiences. The institute is providing two vending machines of sanitary napkin with a capacity of 20 pads each for Rs. 5 at suitable locations in the institute buildings and hostels



CCTV Cameras

Criteria-7: Institutional Values and Best Practices



“Dr. M.S.Gaikwad (Principal –SIT) felicitating Mr. Shivtare(DYSP)”



“Mrs.V.N.Dhawas(Secretary-ICC) felicitating Ms.Deshmukh(PSI)”

Criteria-7: Institutional Values and Best Practices

Gender Sensitization Awareness Programme

Counselling:

Both general and personalized guidance has been concurred to the students. Well-being mindfulness programs for young girl students are organized in hostels and in the institute throughout the academic year. When a complaint or a protest occurs, the students are led to the proper ladies' complaint cell/authorities or explicitly assigned women workforce, one by one. All such matters are kept profoundly classified. The institute takes extreme attention to detail in managing the said matters of advising the young girl student. Through Co-Curricular and extra-Curricular exercises and comprehensive directing of girl-students, the institute strives to ensure the complete character development of female students and female faculty members, resulting in increased fearlessness, positive mental self-portrait, common regard, and so on.



“Mrs. P.P.Ahire Introducing ICC to FE Girls”

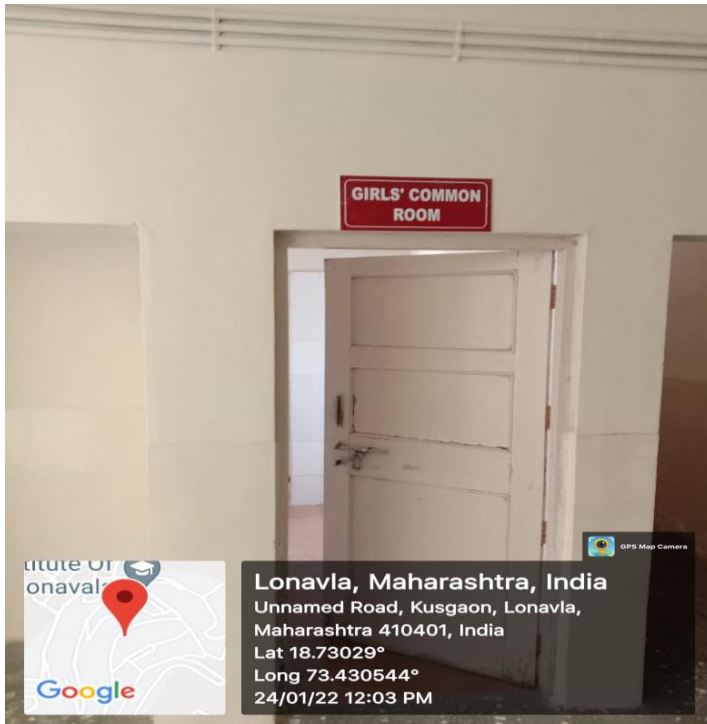


“Mrs. D.K.Shende Informing Students about Code of Conduct”

Criteria-7: Institutional Values and Best Practices

Common Room:

The institute has a separate girl's common room. It is well-lit and well-equipped, allowing students who feel ill or need to relax for a short while to do so. Female aides are provided in the aforementioned waiting areas. Nearby faculty members aids students in receiving medical assistance in the event of a medical emergency. Basic medicines and first-aid equipment are provided to the students.



Girls' Common Room

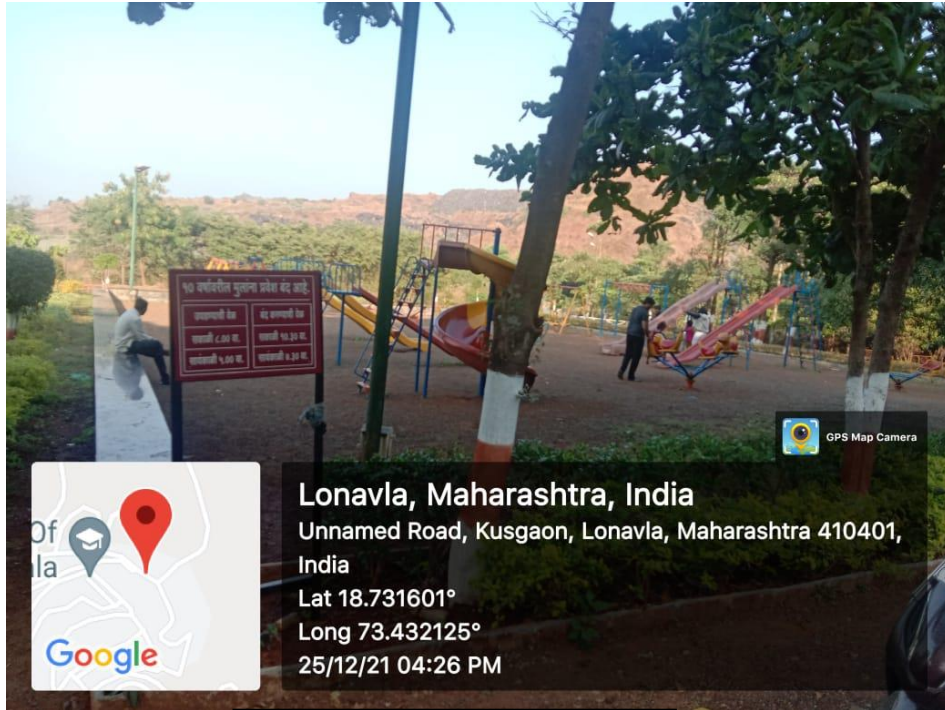


Sanitary Napkin Vending Machine

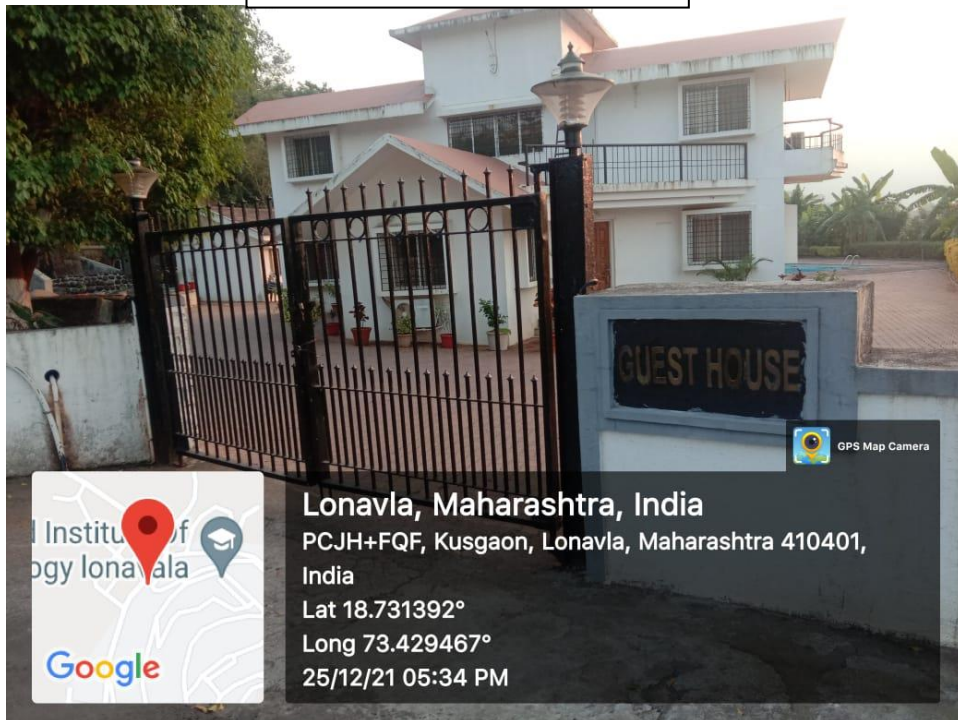
Criteria-7: Institutional Values and Best Practices

Day Care Center:

A day care center for young children is available along with Children Park having modern amenities. The rural health center is on the campus with a separate pediatric section.

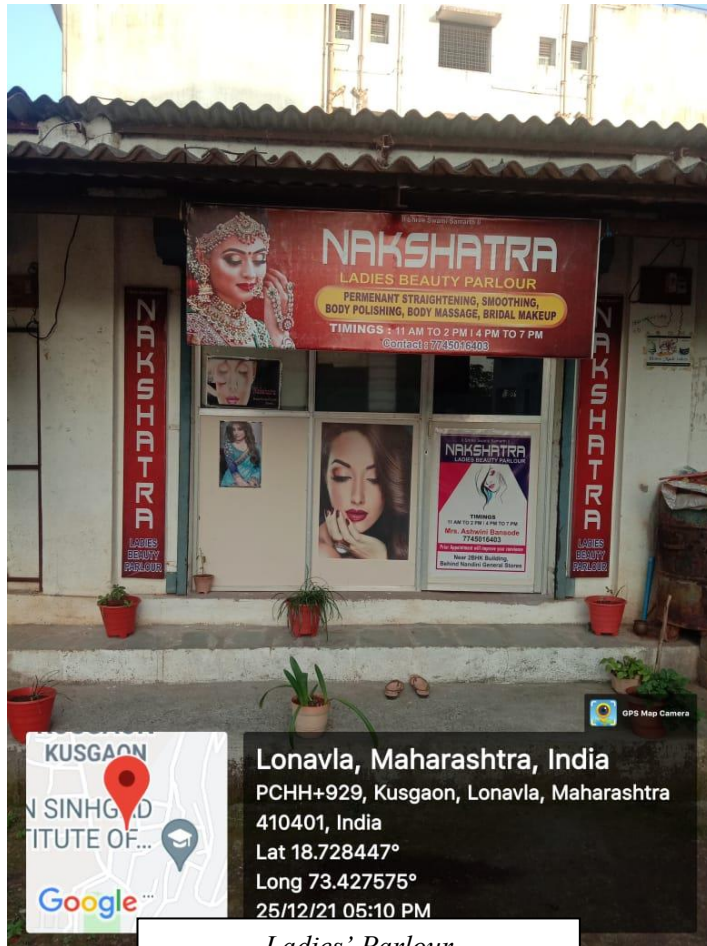


Children Park

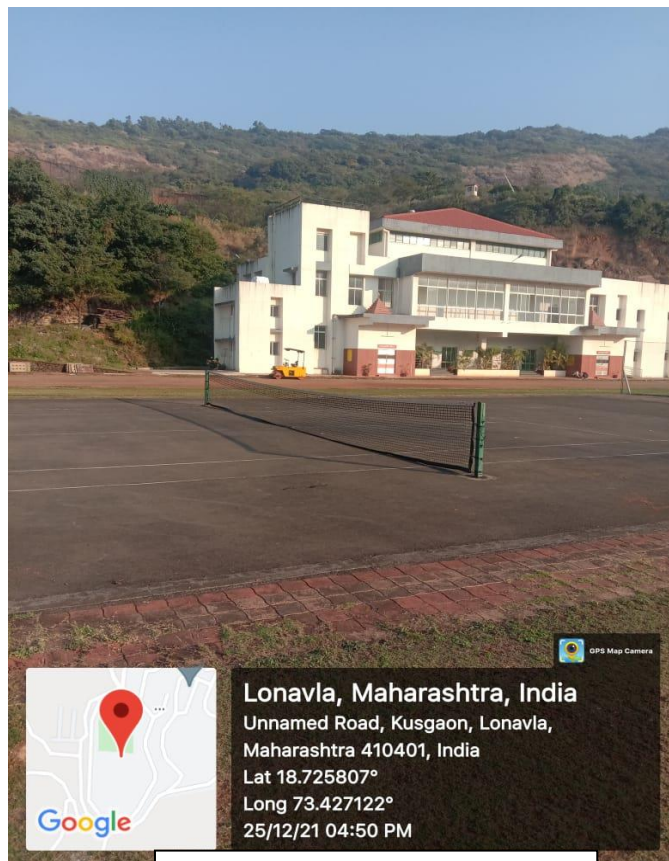


Rest House

Criteria-7: Institutional Values and Best Practices



Ladies' Parlour



Sports Faacility